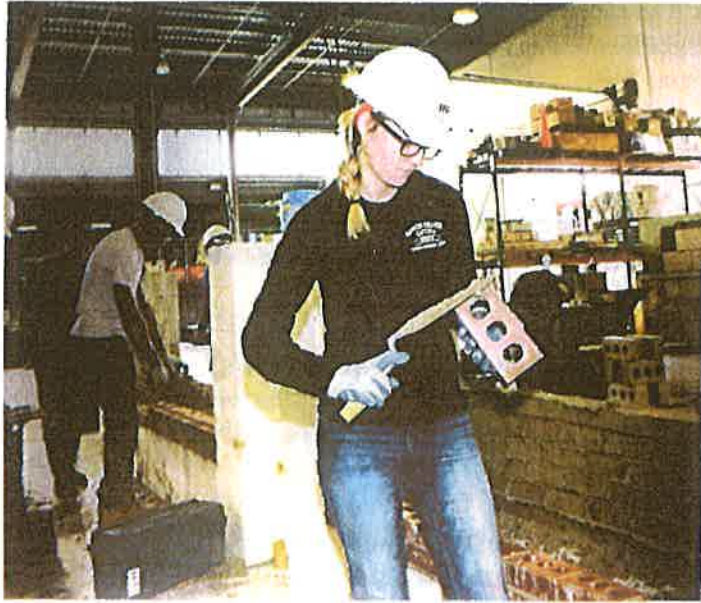


# // BUILDERS' ADVANCEMENT CENTER //

Apprenticeship Guide



## // EMPOWERING BUILDERS, ADVANCING CONSTRUCTION //

### Information in this Guide:

Answers to Frequently Asked Questions about Apprenticeships.....	page 2
Apprenticeship Coordinators/Directors' Contact Information.....	page 3
Descriptions of what each craft does.....	page 4-7
Advancement Center Contact Information.....	page 8

# Answers to Frequently Asked Questions about Apprenticeships:

## What is a Registered Apprenticeship Program?

Registered apprenticeship programs are designed to prepare workers for occupations that require a wide range of skills and knowledge. This preparation consists of on-the-job training and technical classroom instruction.

In an apprenticeship program the concept is to “earn as you learn.” The apprentice generally works full-time and goes to school a minimum of 144 hours per year on a schedule predetermined by the respective craft. Generally, this equates to going to school two days per month.

## How do I become an Apprentice?

Once an individual figures out which craft they are interested in pursuing, they complete an application with the respective apprenticeship program. There are two common selection methods apprenticeship programs use to take in new apprentices: the letter of intent method and the rate and rank method.

With the *letter of intent method*, once the individual completes their application they will be given a list of contractors signatory to that trade and will need to secure a letter of intent to hire from one of the contractors. Based on the current status of work, the individual may need to call through the list several times to secure the letter of intent.

With the *rate and rank method*, once the student completes their application they will be given a series of tests including a math test and often times a fit test where they perform activities of the trade. They will often then complete an interview. The apprenticeship committee then reviews, scores, and ranks the applicants. The applicant at the top of the list will be the first to go to work.

In both methods, the applicant will need to pass a drug test. Upon passing the drug test, the applicant is then registered with the Department of Labor as an apprentice and begins working in the field for the contractor.

## How much money will I earn?

An apprentice begins serving an internship with a contractor working towards becoming a journeyman. The internship starting wage is approximately half of a journeyman's wages, currently \$13 to \$17 per hour, with a benefit package between \$7 to \$20 per hour. So, the contractor is paying \$20-\$30 per hour for wages and benefits on behalf of the apprentice. This is the starting wage. The apprentice will gradually double that wage over the 3-4 year program.

## How much will the training cost me?

The apprenticeship program training is free to the apprentice. The contractors make a training contribution for each hour worked by the apprentice which pays for the training.

## Who administers the Apprenticeship Program?

Each apprenticeship program is overseen by a Joint Apprenticeship Training Committee (JATC). The committee is formed by equal representation from Labor and Management and governed by the Department of Labor. The JATC is responsible for the administrative portion of the training of Apprentices and Journeymen.



## Electrical Workers

The IBEW represents workers in the electrical industry including construction, gas and electric utilities, telecommunications, railroads, and government agencies. Construction and residential electricians work in all phases of the electrical construction and service industry. Their worksites range from single-family residences to state-of-the-art industrial plants. Inside wire workers may install and maintain conduits, switches and converters, as well as wire lighting to complex systems incorporating computerization and high technology. Electricians work in the electric sign industry and increasingly perform more work in the installation of fiber optics and voice/data/video equipment.



## Elevator Constructors

The IUEC represent the most qualified and trained elevator constructors in the world. Members assemble, install and replace elevators, escalators, dumbwaiters, moving walkways and similar equipment in new and old buildings, elevator constructors also maintain and repair this equipment once it is in service, as well as modernize older equipment.



## Glaziers

Glaziers prepare and install various kinds of glass, mirrors, metal framing and doors-entrances to buildings. Floor coverers work with resilient floors, as well as carpet and decorative coverings. Exterior sign and display work, like billboards, is another choice. Other types of work are convention display and show decorators. The work also includes lifting and installing different types of glass and aluminum frames, workings at heights involving ladders, scaffolding, and other types of man lifting devices. Also involved are precise reading of measurements and working with a variety of hand and power tools. The glazier will furnish the following tools: hammer, glass pliers, and putty.



## Heat and Frost Insulators and Allied Workers

Members of this union apply insulation to pipes, tanks, boilers, ducts, refrigeration equipment and other surfaces requiring thermal control of temperatures. The responsibilities of these mechanics, improvers and apprentices also include the manufacture, fabrication, assembling, molding, erection, spraying, pouring, mixing, hanging, preparation, application, adjusting, alteration, repairing, dismantling, reconditioning, corrosive control, testing and maintenance of heat or frost insulation. Workers also handle insulation materials made of fiberglass, rubber, calcium silicate and urethane. Asbestos workers also do removal of asbestos containing materials.





### **Iron Workers**

Members of the Iron Workers assemble and erect steel framework and other metal parts in buildings and on bridges, dams, skyscrapers, factories, and other steel structures. They raise, place, and join steel girders and columns to form structural frameworks, including the welding for metal decking.



### **Laborers'**

LIUNA- the laborers' International Union of North America – is the most progressive, aggressive, and fastest-growing union of construction workers, and one of the most diverse and effective unions representing public service employees. Today our Apprenticeship and Journeyperson training covers areas such as asbestos removal, lead removal, grade checking, locating points with GPS, cutting and burning, scaffolding, mason tending, flagging, traffic control, and pouring concrete.



### **Operating Engineers**

The International Union of Operating Engineers is a labor union within the AFL-CIO representing primarily construction workers who work as heavy equipment operators, mechanics, surveyors, and stationary engineers who maintain heating and other systems in buildings and industrial complexes in the United States and Canada. Founded in 1896, it currently represents roughly 400,000 workers in approximately 170 local unions and operates nearly one hundred apprenticeship programs.



### **Painters and Allied Trades**

IUPAT members work in one or more of several crafts: painting, wall-paper hanging, glazing (glass work), drywall and taping, floor covering, and sign and display work.

Painters and paperhangers work in industrial, commercial, and residential settings from bridges and ships to interior wall of office buildings and homes. Drywall finishers tape, fill in, and smooth seams in sheets of drywall. Glaziers prepare and install various kinds of glass, mirrors, metal framing, and doors/entrances to buildings. Floor coverers work with resilient floors as well as carpet and decorative coverings. Exterior sign and display work, like billboards, is another choice. Other types of work are convention display and show decorators.

# Apprenticeship Coordinators/Directors' Contact Information:

Craft	Contact	Address	Phone
Boilermakers #83	Tom Burgess	5910 E. 86 <sup>th</sup> Street Kansas City, MO 64138	816-523-8300 816-523-2832 Fax
Bricklayers & Allied Craftworkers #15	Dustin Himes	105 West 12 <sup>th</sup> Avenue N. Kansas City, MO 64116	816-471-0880x1348
Carpenters, Cabinetmakers, Floor-layers, & Millwrights	Bob Hale	8955 East 38th Terrace Kansas City, MO 64129	816-471-0883 816-221-6291 Fax
Cement Masons #518	Brian Randle	105 West 12 <sup>th</sup> Avenue N. Kansas City, MO 64116	816-471-0880 x1332 816-471-5566 Fax
Electricians # 124	Shon Lee	303 East 103 <sup>rd</sup> Terrace, Kansas City, MO 64133	816-942-3242 x0 816-942-0854 Fax
Elevator Constructors # 12	Kevin Broussard	Apply Online at <a href="http://www.neiep.org">http://www.neiep.org</a>	816-358-1312 816-313-5645 Fax
Floorlayers District Council # 3	Todd Doree	9902 E 62 <sup>nd</sup> Street Raytown, MO 64133	816-358-2440 816-358-5430
Glaziers District Council #3	Chad Dalton	105 West 12 <sup>th</sup> Avenue N. Kansas City, MO 64116	816 471-0880x1338 816 471-5566 Fax
Heat & Frosts # 27	Scott VanBedder	400 South Main Street Independence, MO 64050	816 252-0588 816 252-8837 Fax
Iron Workers #10	Brian Garrett	105 West 12 <sup>th</sup> Avenue N. Kansas City, MO 64116	816 471-0880x1310 816 471-3377 Fax
Construction Craft Laborers #1290	Donald Slack	8944 Kaw Drive Kansas City, KS 66111	913 441-6100 913-441-6128 Fax
Operating Engineers # 101	Stoney Cox	22770 Route 273 Weston, MO 64098	816 640-2336 816 640-3134 Fax
Painters District Council # 3	Chad Dalton	105 West 12 <sup>th</sup> Avenue N. Kansas City, MO 64116	816 471-0880x1338 816 471-6178 Fax
Pipefitters # 533	Marty Sanderholm	9876 Hickman Mills Dr., Kansas City, MO 64138	816 761-8800 816 761-8801 Fax
Plasterers # 518	Brian Randle	105 West 12 <sup>th</sup> Avenue N. Kansas City, MO 64116	816 471-0880x1332 816 471-5566 Fax
Plumbers # 8	Frank Murray	5950 Manchester Trfwy Kansas City, MO 64130	816 363-8888
Roofers # 20	Matt Lloyd	5100 East 59th Street Kansas City, MO 63130	816-333-2527 816-333-8488 Fax
Sheet Metal Workers # 2	Jason Ferguson	9703 E 53 <sup>rd</sup> St. Raytown, MO 64133	816 353-0038 816 353-0486 Fax
Sprinkler Fitters # 314	Jason Castledine	8510 Hillcrest Road Kansas City, MO 64138	816 444-5113 816 444-5614
Teamsters # 541	Ryan Lewis	4501 Emanuel Cleaver II Blvd. KCMO, 64130	816 921-1700 816 921-1706

To view videos of these directors as well as apprentices, visit the Builders Association website at [buildersassociation.com](http://buildersassociation.com) and click on Workforce then Advancement Center. For general information or to explore other construction industry careers, contact The Builders' Association's Outreach Manager Romond Holt at 816-595-4145 or [rholt@buildersassociation.com](mailto:rholt@buildersassociation.com)

## Descriptions of What Each Craft Does:

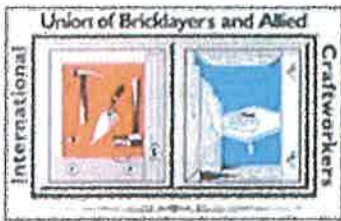
### Boilermakers, Iron Ship Builders, Blacksmiths, Forgers, and Helpers

The Boilermakers are a diverse union of workers in construction, maintenance, manufacturing, professional emergency medical services, repair, and related industries. Boilermakers build and repair ships, fishing boats, ferries, barges, cranes, boilers, tanks, pressure vessels, plate and structural fabrications, as well as other things. These skilled workers often use acetylene torches, power grinders and other equipment for welding, burning, cutting, rigging, layout and bolting. It's hard work, and heavy lifting and dedication to the craft is required.



### Bricklayers and Allied Craftworkers

BAC represents all skilled trowel trades, workers, including bricklayers, tile setters, plasterers, cement masons, marble masons, restoration workers and terrazzo and mosaic workers. Their work can be seen on many buildings, homes, stadiums, monuments, and landmarks throughout many of the United States and Canada.



### Carpenters, Millwrights, Cabinetmakers, and Floorlayers

Carpenters are employed in almost every type of construction activity. Their work is basically commercial type building, concrete forms, interior systems, sheet rock, metal studs, acoustical ceilings and other related work. They are also involved in “rough” and “finish” type carpentry. Millwrights install and perform maintenance on machinery such as conveyor systems and generators. This field requires interpreting blueprints, and then drilling, welding and bolting to precise instructions, sometimes detailed to within a thousandth of an inch.



### Cement Masons' & Plasterers

OPCMIA members represent skilled plasterers, cement masons, shop hands and associated members. Plasterers finish interior walls and ceilings of buildings, apply plaster on masonry, metal, wirelath, or gypsum. Bridges, canals, dams, reservoirs, roads and many other engineering feats would be impossible without the skills of OPCMIA cement masons. Cement masons are responsible for all concrete construction, including pouring and finishing of slabs.







## Plumbers, Pipefitters & Sprinklerfitters

UA is a multi-craft union that represents plumbers and pipe, sprinkler, and refrigerator fitters as well as service technicians. All of these jobs require the installation, remodeling or maintenance of systems that carry water, steam, air, and other liquids or gasses necessary for sanitation, industrial production, heating and air conditioning, and many other uses. Workers measure, cut, and bend pipe as well as weld, braze, caulk, solder, glue, or thread joints at residential and commercial job sites.



## Roofers, Waterproofers, and Allied Workers

Members of the Roofers union install new roofs and remove old roofs using a variety of materials. Roofers install hot built-up and single-ply roofing systems on mostly commercial/industrial structures. Waterproofers install moisture-resistant products on below-grade structures and other surfaces to prevent water intrusion into buildings. The work is performed in all weather conditions. Members also operate a variety of mechanical and electrical equipments associated with the installation of roofing and waterproofing products.



## Sheet Metal Workers

SMWIA members work in several industries. Sheet metal workers fabricate, install, and service heating, venting, and air conditioning systems, blowpipe and industrial systems, metal roofing, coping and flashing, and stainless steel work for restaurants, kitchens, and hospitals. They prepare shop and field drawings manually and with computer programs. Members also provide HVAC/R service.



## Teamsters

The Teamster represent 1.4 million working men and women in virtually every occupation throughout the United States and Canada – including many in the construction industry.

Two-thirds of Teamsters members work in one of five divisions: warehouse, parcel, freight, public employees, and industrial trades. The public employees sector is the union's fastest-growing division.

# // BUILDERS' ADVANCEMENT CENTER //

To advance contractor  
productivity and  
quality construction  
through **education**  
and **technology**, and  
to **recruit** a diverse  
construction  
workforce.

//

// **EMPOWERING BUILDERS,  
ADVANCING CONSTRUCTION //**

*Located in The Builders' Association Education & Training Center*  
105 West 12th Avenue • North Kansas City, MO 64116  
816.471.0880 • [www.buildersassociation.com](http://www.buildersassociation.com)